

MikroTik



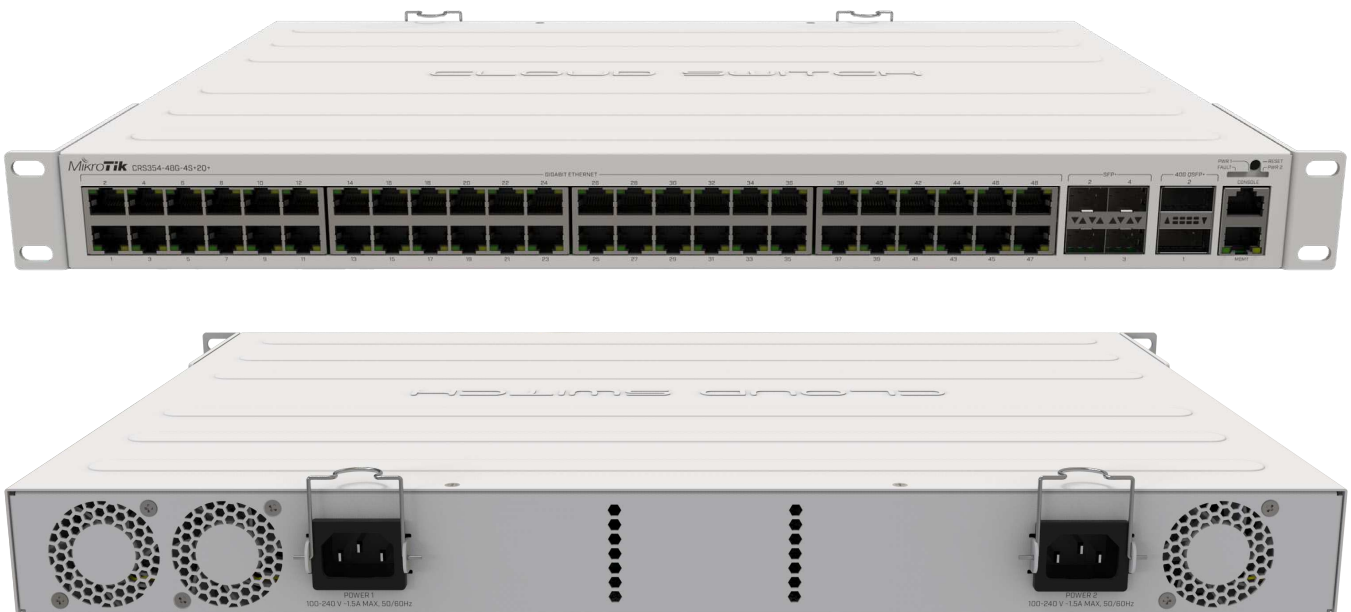
---

## CRS354-48G-4S+2Q+RM

Best price and best performance on the market – this 48 port switch will rock any setup, including 40 Gbps devices!

If you are looking for a single switch that will put your network setup ahead of the curve without costing a fortune, look no further. The new CRS354-48G-4S+2Q+RM is an effective and adaptable rackmount solution for managing networks in demanding and busy environments. With this product we aim to set a new price-performance bar – get more features while spending way less!

**/** High-end performance for the masses: more 10G ports and even 40G ports, because **speed matters**



The 48 port champion you've been waiting for – the bargain of the decade!

This powerful switch has 48 x 1G RJ45 ports and 4 x 10G SFP+ ports. There are also 2 x 40G QSFP+ ports for extremely fast fiber connections or linking with other 40 Gbps devices.

The total non-blocking throughput is 168 Gbps, switching capacity is 336 Gbps and the forwarding rate reaches 235 Mpps.

## Specifications

Product code	CRS354-48G-4S+2Q+RM
CPU	QCA9531, 650 MHz
Size of RAM	64 MB
Storage	16 MB flash
10/100 Ethernet ports	1
10/100/1000 Ethernet ports	48
10G SFP+ ports	4
40G QSFP+ ports	2
Supported input voltage	AC power supply 100 - 240 V
Redundant supply	Yes
Serial port	RJ45
Dimensions	297 x 443 x 44 mm
Operating temperature	-20°C .. +60°C
Operating system	RouterOS (License level 5) or SwitchOS
Max power consumption	60 W

## Included parts



2 IEC cords



Screw and feet  
kit



Rackmount ears



Cable  
management  
brackets

## Switching test results

QCA9531 CRS354-48G-4S+2Q+		RouterOS v6.45.7					
Mode	Configuration	1518 byte		512 byte		64 byte	
		kpps	Gbps	kpps	Gbps	kpps	Gbps
Switching	Non blocking Layer 2 throughput	13329	161,867	38533,8	157,834	235114,7	120,379
Switching	Non blocking Layer 2 capacity	13329	323,735	38533,8	315,669	235114,7	240,758
Switching	Non blocking Layer 1 throughput	13329	168	38533,8	168	235114,7	120,379
Switching	Non blocking Layer 1 capacity	13329	336	38533,8	336	235114,7	240,758

Like other CRS products, **CRS354-48G-4S+2Q+RM** comes with a decent built-in CPU, that can utilize all RouterOS features, but with some performance restrictions (indicated in table below).

## CPU Layer 3 performance results

QCA9531 CRS354-48G-4S+2Q+		RouterOS v6.45.7					
Mode	Configuration	1518 byte		512 byte		64 byte	
		kpps	Mbps	kpps	Mbps	kpps	Mbps
Bridging	none (fast path)	34,9	423,8	58,5	239,6	119,8	61,3
Bridging	25 bridge filter rules	26,5	321,8	42,9	175,7	44,9	23
Routing	none (fast path)	35,4	429,9	61,8	253,1	116,8	59,8
Routing	25 simple queues	33,7	409,3	46,8	191,7	57,5	29,4
Routing	25 ip filter rules	23,7	287,8	30,1	123,3	31,4	16,1