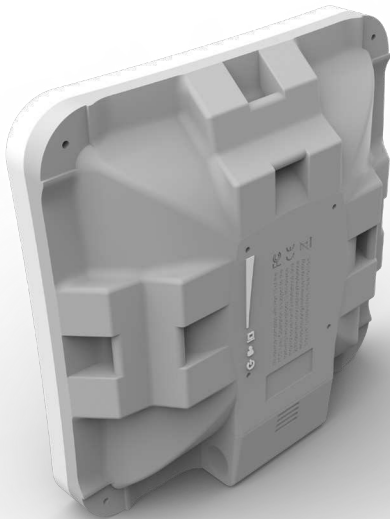


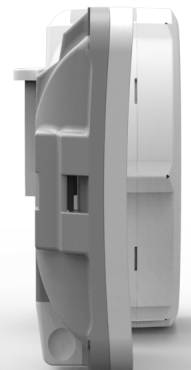
SXTsq 5 (High power)

The SXTsq 5 is a compact and lightweight outdoor wireless device with an integrated antenna, perfect for point-to-point links or as a CPE unit. It is compact, weatherproof and easy to mount. The SXTsq 5 retains a 16 dBi antenna like the SXT 5, our previous model, yet the antenna design has been improved and the physical size has been dramatically reduced - the SXTsq is two times thinner. Higher TX power allows to reach longer distances than SXTsq Lite 5.



The enclosure includes slots for directly attaching a hose clamp mount in three different mounting places, with ability to be mounted on horizontal railings. The device includes one 10/100 Mbit ethernet port. There is also an easily accessible grounding connection to protect it against lightning.

Comparison to previous SXTs



24 V 0.38 A power
adapter



Metal ring



PoE injector

Specifications

Product code	RBSXTsq5HPnD (International), RBSXTsq5HPnD-US (USA)	
CPU	AR9344	
CPU nominal frequency	600 MHz	
CPU core count	1	
Size of RAM	64 MB	
Storage	16 MB Flash	
10/100 Ethernet ports	1	
Wireless bands	5 GHz radio	
Wireless regulations	Specific frequency range may be limited by country regulations	
Operating frequency	International	5150 - 5875 MHz
	USA	5170 - 5250 MHz 5725 - 5835 MHz
Protocols	802.11a/n	
Chains	2	
Antenna gain	16 dBi	
Antenna beam width	23°	
Wireless chip model	AR9344	
PoE in	Yes	
Supported input voltage	10 V - 28 V, passive PoE	
Dimensions	129 x 129 x 34 mm; package: 255 x 180 x 45 mm	
Weight	Unit: 295 g; package: 492 g	
Operating temperature	-40 to 70° C	
License level	4	
Operating System	RouterOS	
Max Power consumption	7 W	

Wireless specifications

RATE (5 GHz)	Tx (dBm)	Rx (dBm)
6MBit/s	28	-96
54MBit/s	25	-80
MCS0	28	-96
MCS7	24	-75

QuickMount Pro adjustable mount available separately.

