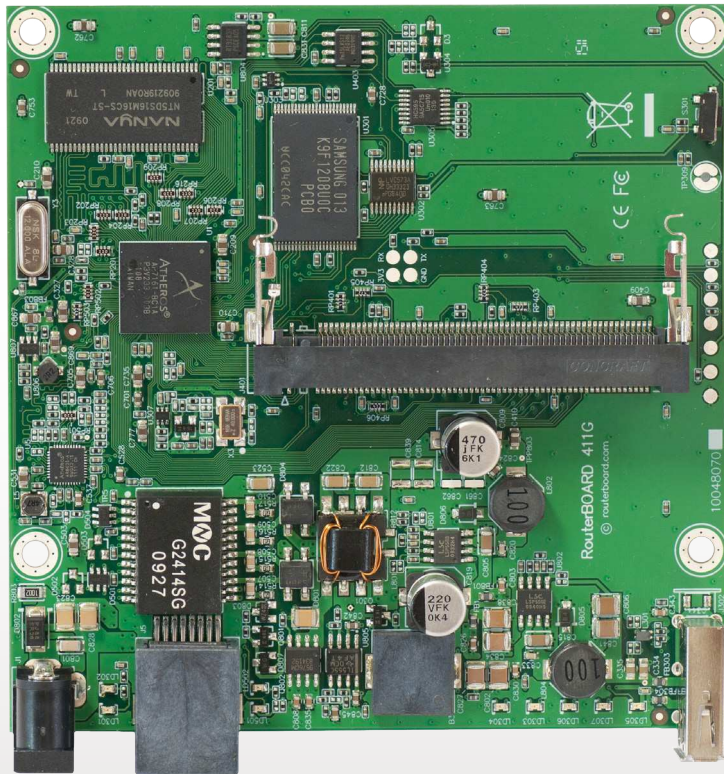


# RB411GL



The RB400L is our new low cost series. The RB411GL has one miniPCI slot, one Gigabit Ethernet port and a USB port for 3G or storage.

Use this device in an outdoor case for a CPE device, or a point to point wireless link installation. The miniPCI slot allows you to choose your own preferred wireless card model. The Gigabit port allows you to fully benefit from the 802.11n MIMO wireless speed.

It's powered by an Atheros 680MHz CPU and has 32MB of RAM and a Level4 RouterOS license.

|                   |   |
|-------------------|---|
| CPU               | Atheros AR7161 680MHz   |
| Memory            | 64MB DDR SDRAM onboard memory                                 |
| Boot loader       | RouterBOOT  |
| Data storage      | NAND memory chip  |
| Ethernet          | One 10/100/1000 Gigabit Mbit/s Ethernet ports with Auto-MDI/X |
| miniPCI           | One MiniPCI Type IIIA/IIIB slots                              |
| Expansion         | One USB 2.0 port with 5V power                                |
| Extras            | Reset switch, beeper, voltage monitor                         |
| Serial port       | -   |
| LEDs              | Power, NAND activity, 5 user LEDs                             |
| Power options     | PoE: 8-28V DC on Ether1 (Non 802.3af). Jack: 8-30V DC         |
| Dimensions        | 105 mm x 105 mm, Weight: 105g                                 |
| Power consumption | 1,4W board only, 10W available to miniPCI card                |
| Operating System  | MikroTik RouterOS, L4 license                                 |