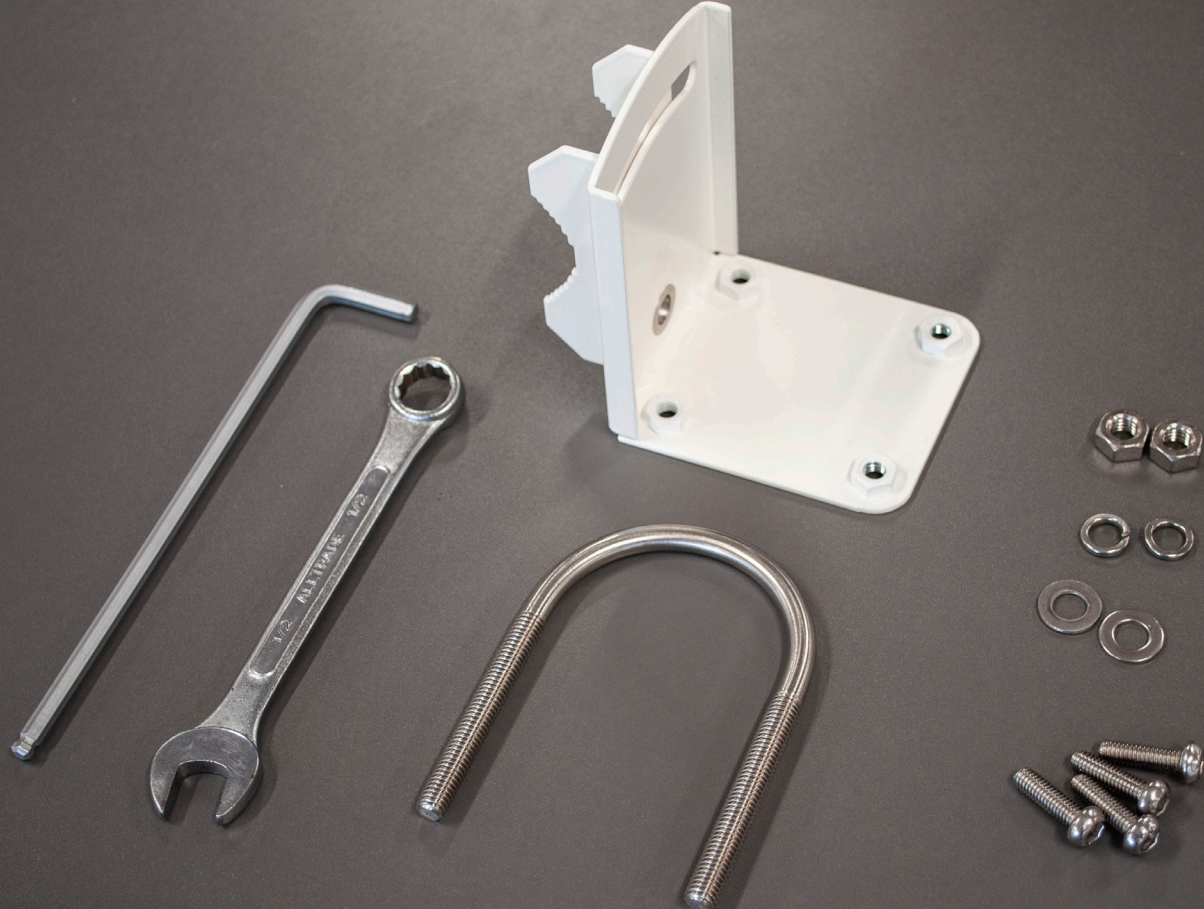
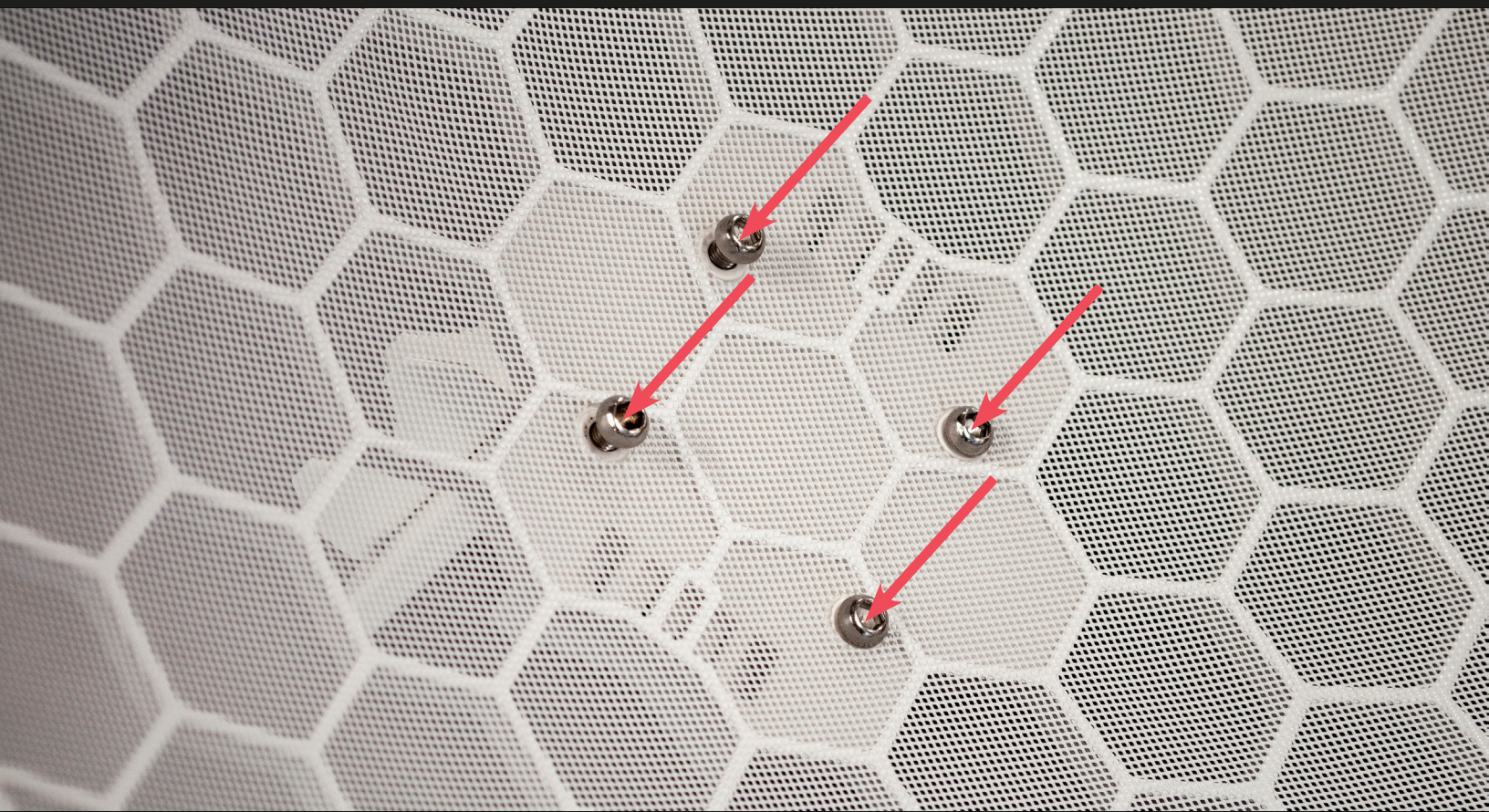


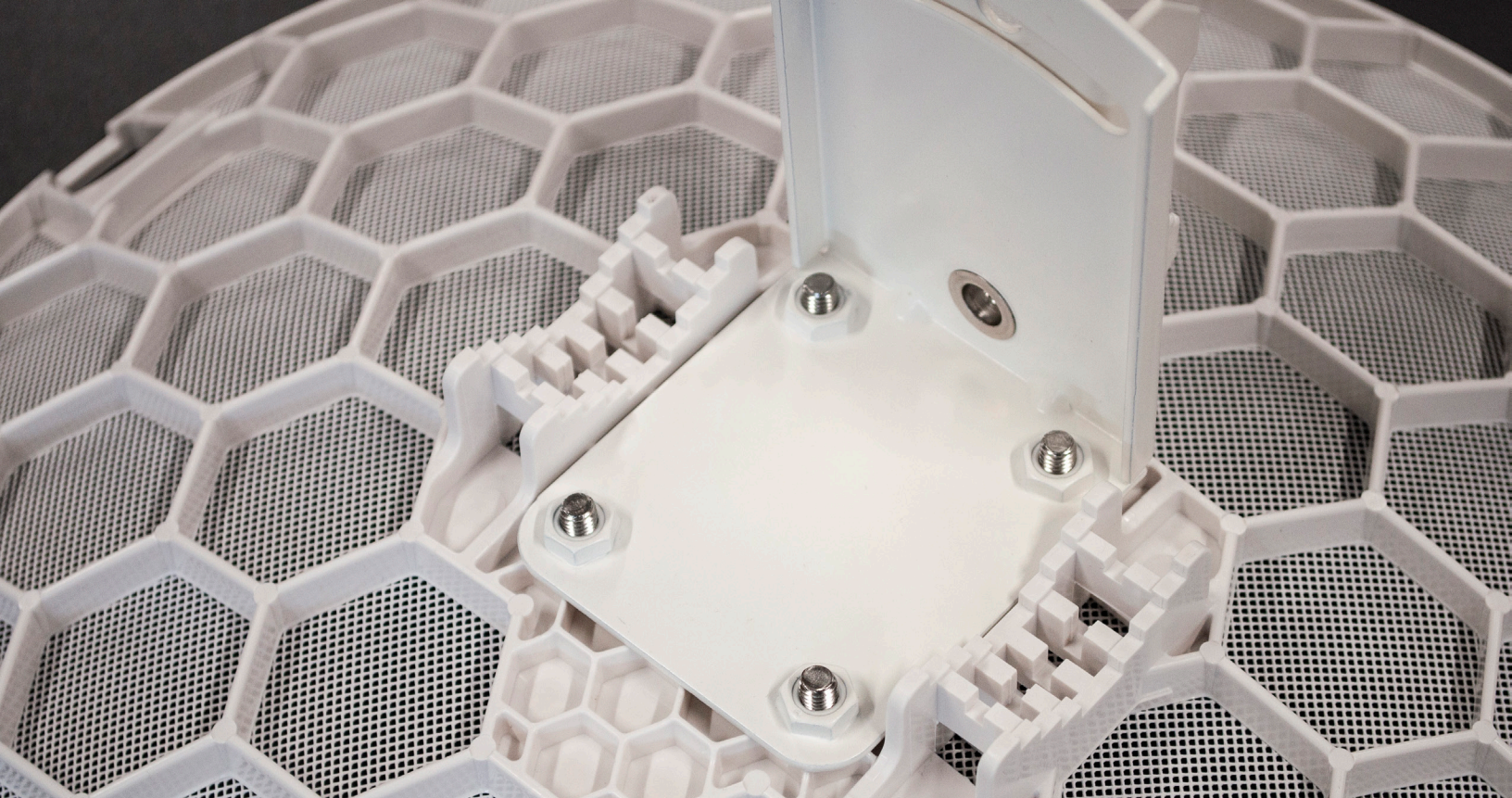
Illustrated mounting
guide for LHG



- 1** Use the provided LHG mounting kit, 1/2 wrench and hex key. The tools are not included in the kit.

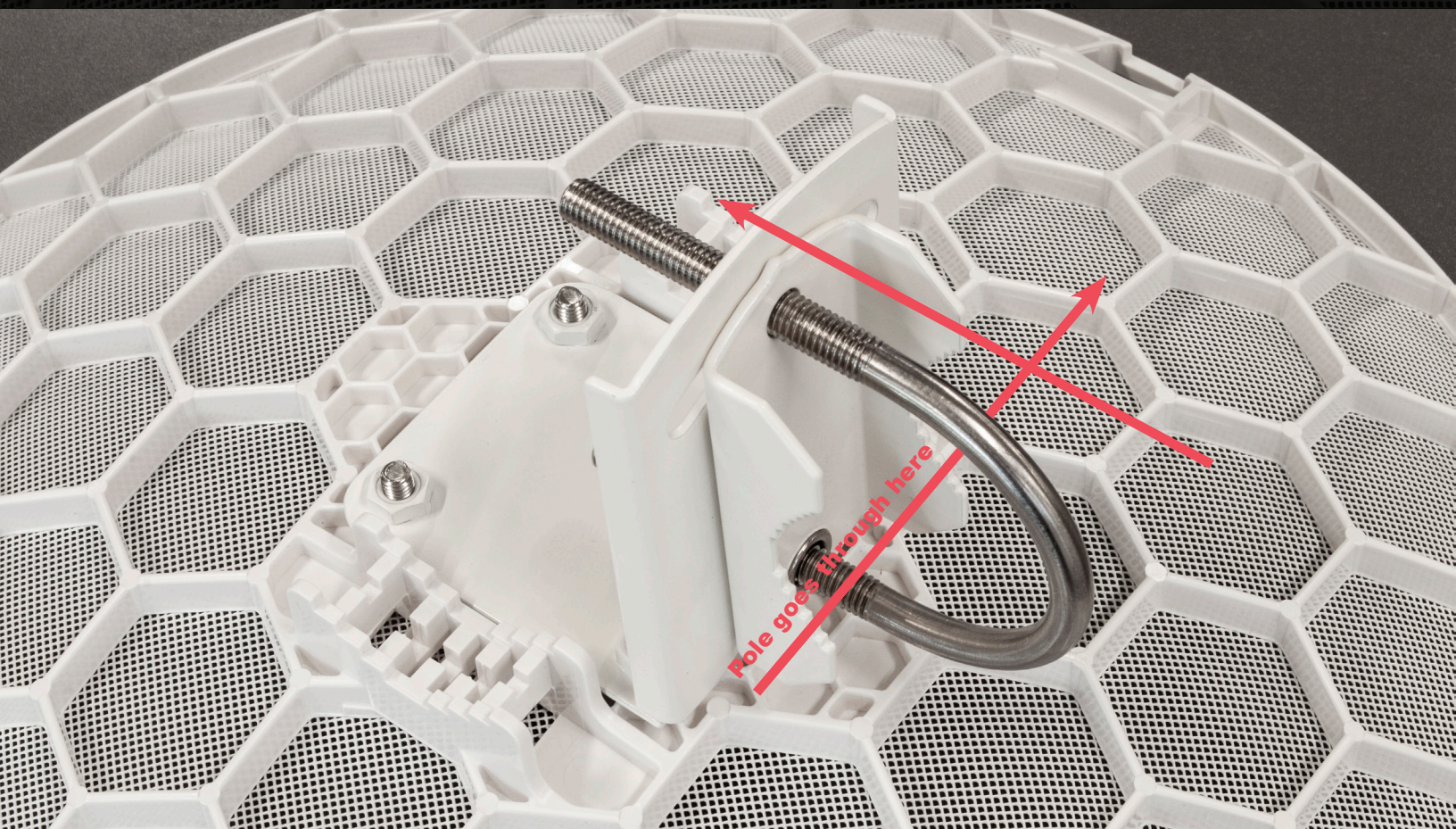


- 2** Place your LHG mount on the back of the dish and fix it with the 4 head screws from the front.



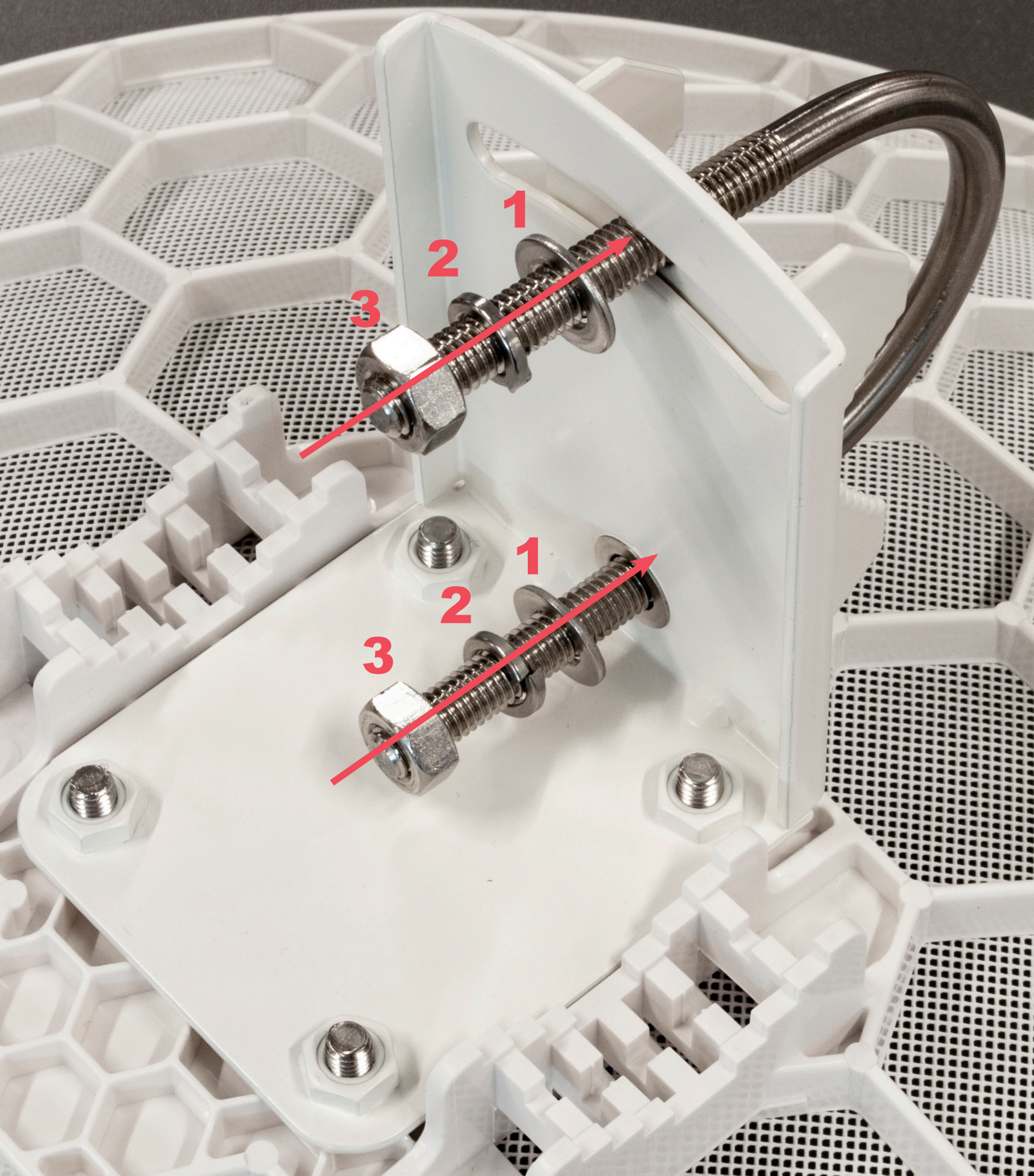
3

Make sure the mount is well fixed.



4

Put the dish to the pole and apply provided U bolt to fix the product to the pole.



5

Use the provided M8 washers and nuts in the order that is specified in the image. Tighten the nuts with the 1/2 wrench.