

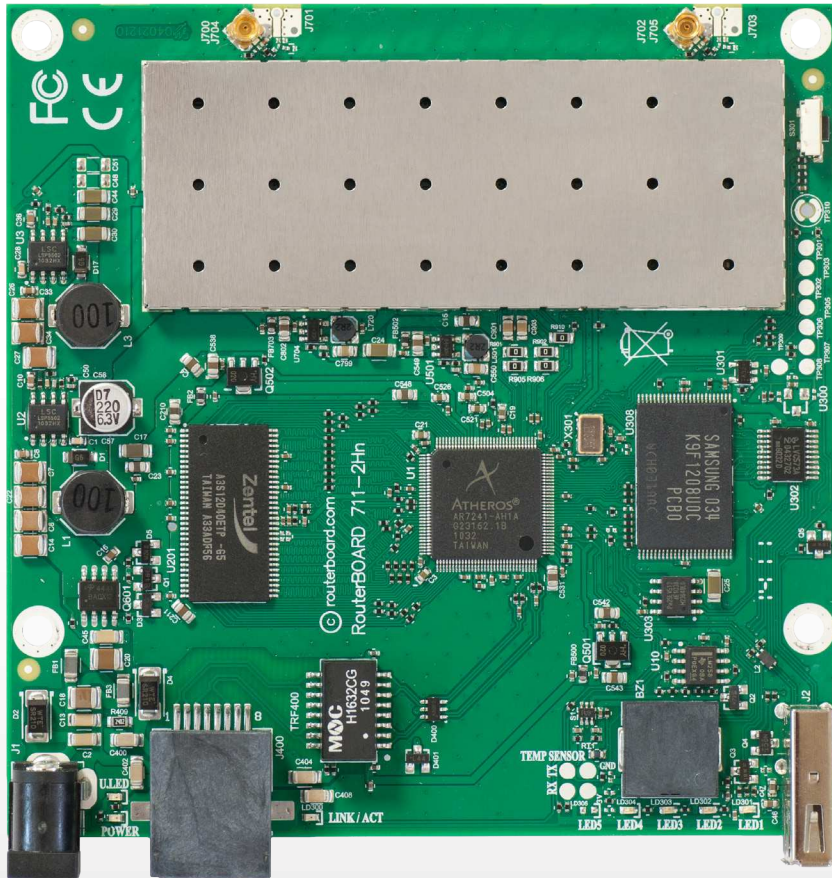
# RB711UA-2HnD

Perfect for building AP devices

The RB711 is a small 2GHz wireless router, it has built in wireless with two chains, a USB port and PoE/Jack powering support.

RB711 includes RouterOS - the operating system, which can be a router, firewall, bandwidth manager, a CPE, AP and more.

The integrated 2GHz 802.11b/g/n wireless card is capable of up to 30dBm transmit power output! It has 16kV ESD protection on both Ethernet and Wireless ports.



Feature / Model	RB711-2Hn	RB711UA-2HnD
Wireless chains	1	<b>2</b>
USB	-	<b>Yes</b>
License	L3 - CPE	<b>L4 - AP</b>
RAM	32MB	<b>64MB</b>
Powering	PoE	<b>Poe / Jack</b>

CPU	Atheros AR7241 400MHz network processor
Memory	DDR SDRAM onboard memory
Data storage	64MB onboard NAND memory chip
Ethernet	One 10/100 Mbit/s Fast Ethernet port with Auto-MDI/X, L2MTU 2030
Wireless	Built in 2GHz AR9283 802.11b/g/n card with 2 MMCX connectors
Extras	Reset switch, Beeper
LEDs	Power, NAND activity, 5 user LEDs
Power options	PoE: 8-30V DC on Ether1 (Non 802.3af).
Dimensions	10.5 cm x 10.5 cm (4.13 in x 4.13 in) Weight: 67g
Power consumption	Up to 4.5W at 18V full load (0.245A)
Operating System	MikroTik RouterOS, Level4 license

RX sensitivity	802.11b/g: -92 dBm @ 6Mbps to -75 dBm @ 54 Mbps 802.11n: -92 dBm @ MCS0 to -71 dBm @ MCS7 40MHz
TX power	802.11b/g: 30dBm @ 6Mbps to 27dBm @ 54 Mbps 802.11n: 30dBm @ MCS0 to 23dBm @ MCS7
Modulations	OFDM: BPSK, QPSK, 16 QAM, 64QAM DSSS: DBPSK, DQPSK, CCK