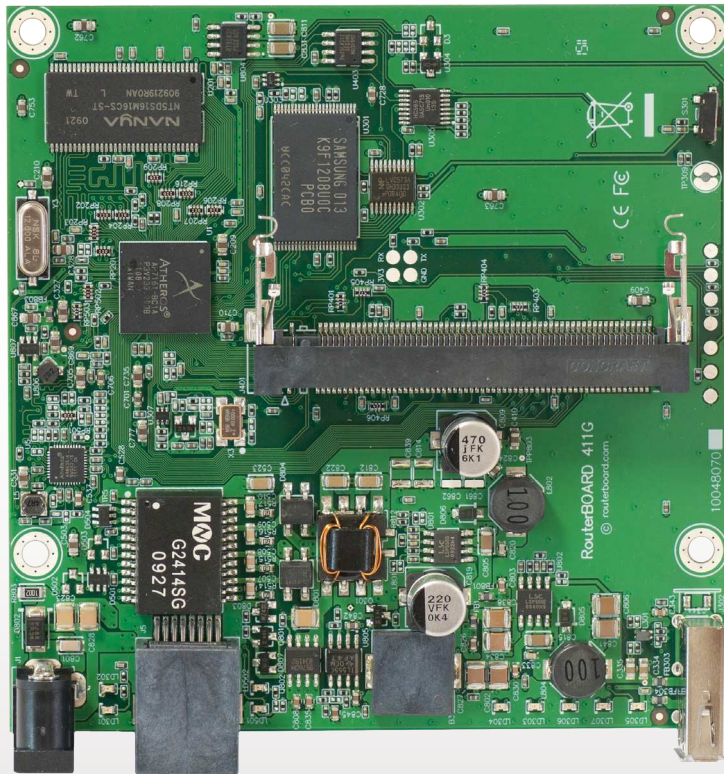


# RB411GL



The RB400L is our new low cost series. The RB411GL has one miniPCI slot, one Gigabit Ethernet port and a USB port for 3G or storage.

Use this device in an outdoor case for a CPE device, or a point to point wireless link installation. The miniPCI slot allows you to choose your own preferred wireless card model. The Gigabit port allows you to fully benefit from the 802.11n MIMO wireless speed.

It's powered by an Atheros 680MHz CPU and has 32MB of RAM and a Level4 RouterOS license.

CPU	Atheros AR7161 680MHz
Memory	64MB DDR SDRAM onboard memory
Boot loader	RouterBOOT
Data storage	NAND memory chip
Ethernet	One 10/100/1000 Gigabit Mbit/s Ethernet ports with Auto-MDI/X
miniPCI	One MiniPCI Type IIIA/IIIB slots
Expansion	One USB 2.0 port with 5V power
Extras	Reset switch, beeper, voltage monitor
Serial port	-
LEDs	Power, NAND activity, 5 user LEDs
Power options	PoE: 8-28V DC on Ether1 (Non 802.3af). Jack: 8-30V DC
Dimensions	105 mm x 105 mm, Weight: 105g
Power consumption	1,4W board only, 10W available to miniPCI card
Operating System	MikroTik RouterOS, L4 license