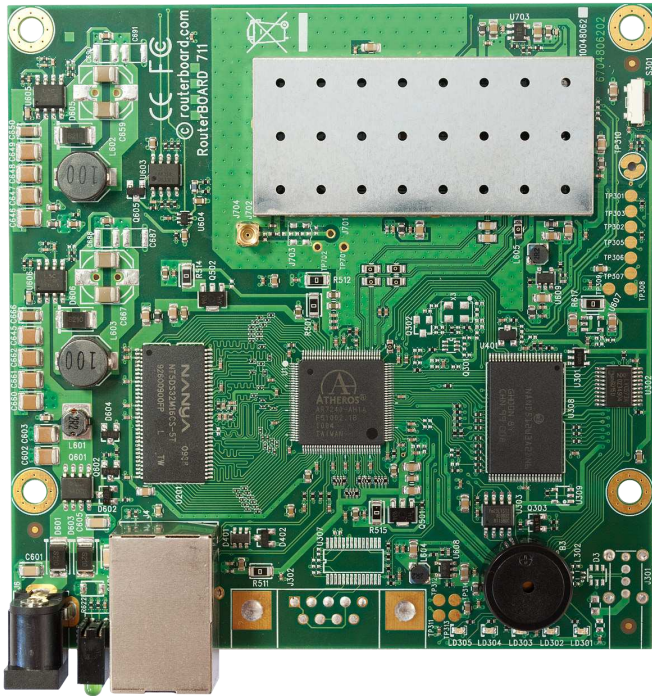


# RouterBOARD 711A-5Hn

Perfect for building AP/base station devices



The RB711 is a small RouterBOARD wireless router with an integrated 5GHz 802.11a/n wireless card.

Perfect for making low cost AP devices.

RB711 includes RouterOS - so it can be a router, firewall, bandwidth manager, a CPE /AP and more - or all at the same time.

This device is available with one MMCX connector (802.11n one chain).

The integrated wireless card is capable of up to 23dBm transmit power output.

Built in 10kV ESD protection on RF port.

CPU	Atheros AR7240 400MHz network processor
Memory	64MB DDR SDRAM onboard memory
Boot loader	RouterBOOT
Data storage	64MB onboard NAND memory chip
Ethernet	One 10/100 Mbit/s Fast Ethernet port with Auto-MDI/X
miniPCI	none
Wireless	Built in 5GHz AR9280 802.11a/n card, One MMCX connector
Extras	Reset switch, Beeper, Voltage and Temperature monitor
Ports	No serial port
LEDs	Power, NAND activity, 5 user LEDs
Power options	Power over Ethernet: 10..28V DC (no power over datalines). Power jack: 10..28V DC
Dimensions	10.5 cm x 10.5 cm (4.13 in x 4.13 in) Weight: 67g
Power consumption	Up to 4.5W at 18V full load (0.245A)
Operating System	MikroTik RouterOS v4, Level4 license

RX sensitivity	<b>802.11a:</b> -92 dBm @ 6Mbps to -76 dBm @ 54 Mbps <b>802.11n:</b> -92 dBm @ MCS0 to -73 dBm @ MCS7
TX power	<b>802.11a:</b> 23dBm @ 6Mbps to 19dBm @ 54 Mbps <b>802.11n:</b> 22dBm @ MCS0 to 15dBm @ MCS7
Modulations	OFDM: BPSK, QPSK, 16 QAM, 64QAM DSSS: DBPSK, DQPSK, CCK