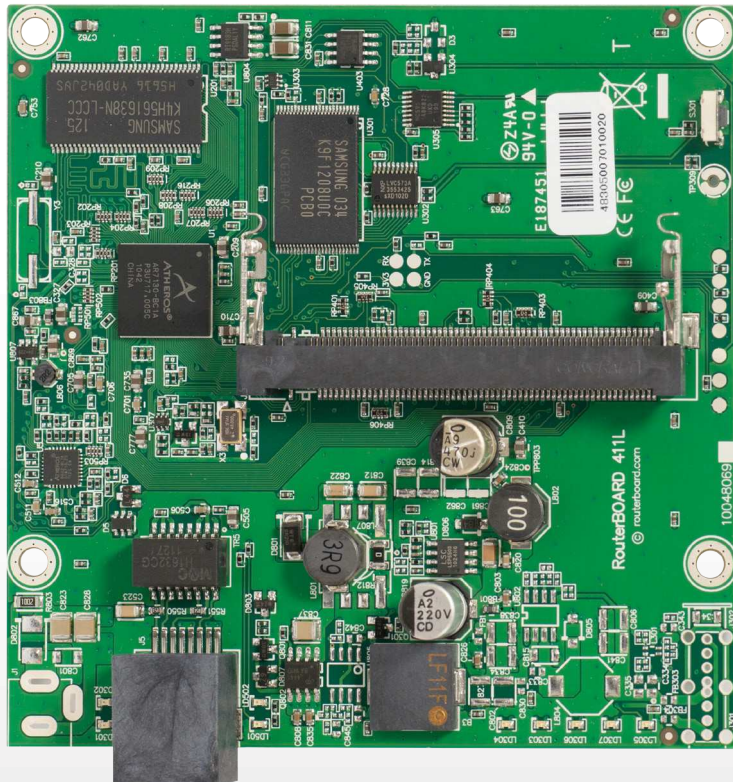


# RB411L

The RB400L is our new low cost series. The RB411L has one miniPCI slot and one Ethernet port.

Use this device in an outdoor case for a CPE device, or a point to point wireless link installation. The miniPCI slot allows you to choose your own preferred wireless card model.

It's powered by an Atheros 300MHz CPU and has 32MB of RAM and a Level3 RouterOS license.



CPU	Atheros AR7130 300MHz
Memory	32MB DDR SDRAM onboard memory
Boot loader	RouterBOOT
Data storage	NAND memory chip
Ethernet	One 10/100 Mbit/s Ethernet ports with Auto-MDI/X
miniPCI	One MiniPCI Type IIIA/IIIB slots
Expansion	-
Extras	Reset switch, beeper
Serial port	-
LEDs	Power, NAND activity, 5 user LEDs
Power options	PoE: 8-28V DC on Ether1 (Non 802.3af).
Dimensions	105 mm x 105 mm, Weight: 105g
Power consumption	1,4W board only, 10W available to miniPCI card
Operating System	MikroTik RouterOS, L3 license