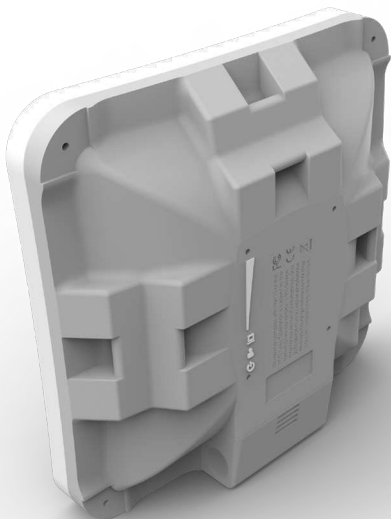


SXTsq 5 ac

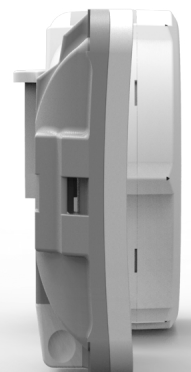
The SXTsq 5 ac is a compact and lightweight outdoor 5Ghz 802.11ac wireless device with an integrated antenna, perfect for point-to-point links or as a CPE unit. The device includes one 10/100/1000 Mbit Ethernet port to fully utilize speeds that 802.11ac protocol provides.

The SXTsq 5 ac retains a 16 dBi antenna like the SXT 5 ac, our previous model, yet the antenna design has been improved and the physical size has been dramatically reduced - the SXTsq is two times thinner.



The weatherproof enclosure includes slots for directly attaching a hose clamp mount in three different mounting places, with ability to be mounted on horizontal railings. There is also an easily accessible grounding connection to protect it against lightning.

Comparison to previous SXTs



24 V 0.38 A power adapter



Metal ring



Gigabit PoE injector

Specifications

Product code	RBSXTsqG-5acD (International), RBSXTsqG-5acD-US (USA)	
CPU	IPQ-4018, 4 cores, nominal frequency 716 MHz	
Size of RAM	256 MB	
Storage	16 MB Flash	
10/100/1000 Ethernet ports	1	
Wireless bands	5 GHz radio	
Wireless regulations	Specific frequency range may be limited by country regulations	
Operating frequency	International	5150 - 5875 MHz
	USA	5170 - 5250 MHz 5725 - 5835 MHz
Protocols	802.11a/n/ac	
Chains	2	
Antenna gain	16 dBi	
Antenna beam width	23°	
Wireless chip model	IPQ-4018	
PoE in	Yes	
Supported input voltage	10 V - 30 V, passive PoE	
Ingress protection	IP55	
Dimensions	129 x 129 x 34 mm; package: 255 x 180 x 45 mm	
Weight	Unit: 295 g; package: 492 g	
Operating temperature	-40 to 70° C	
License level	3	
Operating System	RouterOS	
Max Power consumption	7 W	

Wireless specifications

RATE (5 GHz)	Tx (dBm)	Rx (dBm)
6MBit/s	25	-96
54MBit/s	21	-80
MCS0	25	-96
MCS7	20	-75
MCS9	18	-70

QuickMount Pro adjustable mount available separately.

